

Leadership

To Resilience 11.11.2020

The Most Important Israeli conference
of CEOs, COO & Supply Chain Executives™



Live conference



08:00



11.11.2020

The long-term consequences of the global epidemic are still uncertain, one thing is clear: The current crisis will greatly affect how business is conducted in the future; the epidemic continues to develop. At the conference we will address the changes required in organizations during this period, what is the holistic view of the potential effects that will apply to organizational strategy, what new strategy do they need to build in order to stabilize in the current environment and for the future?



Kobi Ben Moshe,
CEO Aviv-AMCG



Prof. Amir Yaron,
Bank of Israel
Governor



YOAV WEKSLER,
Conference Chairman
EVP, COO Rafael



Ori Tadmor,
President of KLA
Israel



Yaky Yanay,
CEO & President
Pluristem



Mendi Zaltzman,
CEO Haifa port



Eyal Malis,
CEO Tnuva Group



Rajinder Bhatia,
President and CEO,
Bharat Forge
Defence and
Aerospace



**Sigal Regev
Rosenberg**
CEO at Meuhedet
Health Services



Ofer Peleg
VP, Global Supply
Chain Operations
Netafim



Mahmood sharif,
Director of
economic studies
at trends research
and sdvisory



Nadav Turner
YPH CEO (Yunnan
Phosphate) ICL-China



Rami Levy, CEO of
Rami Levy Hashikma
Marketing



Dr. Tomer Simon
National Technology
Officer, Microsoft
Israel



Dikla Mor, Senior
Vice President
Aviv-AMCG



Yifat Kaplan
VP, Supply Chain
PALRAM



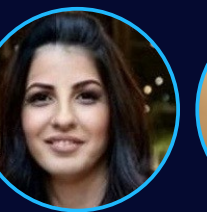
Col. (Ret.) Avi Dadon,
Deputy Director, General
Head Directorate of
Procurement &
Production ISRAEL
MINISTRY OF DEFENSE



Kfir Suisa,
Global Chief
Operating Officer at
SodaStream



Dr. Erez Yaakobi,
psychologist and
senior lecturer at
the Ono Academic
Campus



Sigal Georgevich,
CEO of the Israeli
Coo & SCM forums



**HADAR LEVI
STAND-UP**

Come hear from friends in Israel and around the world, CEOs and VPs in Operations and Chain will share the challenges, the management strategies as leaders who currently navigate large and complex organizations to shape organizational resilience. Conference participants are the top supply chain and operations executives from leading organizations in Israel about 900 Participants.



About operations & supply chain conference

ONLINE REGISTRATION

Leadership To Resilience



08:00 Registration & Virtual

08:45 PLENARY SESSION - Chair's Opening Remarks

YOAV WEKSLER, Conference Chairman

EVP, COO Rafael Advanced Défense systems

Sigal Georgevici, CEO of the Israeli Coo & SCM forums

Opening Remarks:

The Bank of Israel's steps in the crisis, the economic situation and a look ahead

Prof. Amir Yaron, Bank of Israel Governor

09:20 Keynote Speaker:

How to Drive fast Change Through Leadership

Ori Tadmor, President of KLA Israel

09:40 Keynote Speaker: Organizational culture, the immune system of companies in managing a health crisis

Yaky Yanay , CEO & President Pluristem

10:00 The impact of the corona on the business world through world health data

Sigal Regev Rosenberg, CEO of the United Health Insurance Fund

10:20 Online Networking Break

10:40 The experience of the UAE in coping the challenges caused by covid-19 in the field of foreign trade, supply chains

Mr. Mahmood sharif, Director of economic studies at trends research and advisory



11:00 One-on-One Interviews: Leadership Insights

Moderator: Kobi Ben Moshe, CEO of Aviv-AMCG

Speakers:

Eyal Malis , CEO Tnuva Group

Rami Levy, CEO of Rami Levy Hashikma Marketing

11:40 Management and Technology in the New Normal

Dr. Tomer Simon, National Technology Officer, Microsoft Israel

Leadership To Resilience



- 12:00** A corporation in a time of change
a time of corona and a time of privatization - at all times together
Mendi Zaltzman, CEO Haifa port
- 12:20** Rising above Disruption: An Adapting Business World
Rajinder Bhatia, President and CEO, Bharat Forge Defence and Aerospace
- 12:40** Growth in the face of the economic crisis
Kobi Ben Moshe , CEO of Aviv-AMCG
- 13:00** The organization's resilience strategy - leadership in a changing environment
Senior Managing Director U.S.A
- 13:20** Hadar Levy, in an interactive stand-up meeting! Let's laugh about everything!
About the period, you and how much fun it is to live !!! 
Free yourselves from mute, I'm on my way to you!
- 11:30** Refreshment Break
- 13:40** Session A:Operational creativity
Moderator: YOAV WEKSLER, EVP, COO Rafael Advanced Défense systems
- 14:00** Overview of Corona Insights, Lessons and Applications -What was what is
left and what do we want it to remain?
Kfir Suisa, Global Chief Operating Officer at SodaStream International
- 14:20** Israeli leadership in China - identifying opportunities and growing activity
Nadav Turner,YPH CEO (Yunnan Phosphate) ICL-China
- 14:40** Flattening the Noise Ordinance Curve - Combining Technologies, Processes and
Innovation to Maintain Continuity of the Organization in a Changing Period,
Raphael's Story
YOAV WEKSLER, EVP, COO Rafael Advanced Defense systems
- 13:40** Session B: Leadership in a time of crisis
Moderator: Dikla Mor, Senior Vice President, Aviv-AMCG
- 14:00** Glocal? From global to local, questions and solutions
Ofer Peleg, VP Global Supply Chain Global Operations Netafim
- 14:20** Management in an era of uncertainty disruptions in operations and Supply chain
Yifat Kaplan, VP Supply Chain PALRAM INDUSTRIES
- 14:40** How does the Ministry of Defense support Israeli industry in the current era?
Col. (Ret.)Avi Dadon, Deputy Director, General Head
Directorate of Procurement & Production
- 15:00** Guest speaker
Managing "Horror" - How Do Leaders Make Crisis Decisions?
Dr. Erez Yaakobi, psychologist and senior lecturer at the Ono Academic Campus

Leadership To Resilience

תנובה

KLA+

sodastream®

Pluristem
Therapeutics Inc.

רפאל
מערכת לחימה מתקדמת בע"מ

מאוחדת
משנים את עולם הבריאות בישראל

מכל חיפה
גאווה ישראלית, עוצמה עולמית

YPH
海磷

Microsoft

ICL

NETAFIM™
GROW MORE WITH LESS

רמי לוי
שיווק השקמה
סל הקניות הזול במדינה

Mashik
We Procure Your Success

PALRAM



BOS
RFID & Supply Chain Solutions

DIMEX

You Can Count On It
NextVine

TRENDS

מרכז טרננדז ללבוט והאסטטשארט
TRENDS RESEARCH & ADVISORY

GreenBook
הכרטיס שעובד בשבילך